

Effect of Roselle calyx Extract on Gingipain Activity, Production of Inflammatory Cytokines, and Oral Bacterial Morphology

by Herastuti Sulistyani

Submission date: 02-Dec-2021 11:51AM (UTC+0700)

Submission ID: 1718117520

File name: jmbfs-1045-sulistyani.pdf (976.42K)

Word count: 5776

Character count: 31725

EFFECT OF ROSELLE CALYX EXTRACT ON GINGIPAIN ACTIVITY, PRODUCTION OF INFLAMMATORY CYTOKINES, AND ORAL BACTERIAL MORPHOLOGY

Herastuti Sulistyani, Mari Fujita, Futoshi Nakazawa*

Address(es): Professor, Futoshi Nakazawa,
Health Sciences University of Hokkaido, School of Dentistry, Department of Oral Microbiology, 1757 Kanazawa, Ishikari-Tobetsu,
Hokkaido 061-0293, Japan, Tel: +81 133 23 2484.

*Corresponding author: nakazawa@hoku-iryo-u.ac.jp

doi: 10.15414/jmbfs.2016/17.6.3.961-965

ARTICLE INFO

Received 14. 1. 2016
Revised 24. 10. 2016
Accepted 25. 10. 2016
Published 1. 12. 2016

Regular article



ABSTRACT

This study to investigate the effect of roselle calyx extract on gingipain activity, production of inflammatory cytokines, and oral bacterial morphology. The inhibitory effect of roselle calyx extract (RCE) on Arg- (Rgp) and Lys- gingipain (Kgp) was evaluated using synthetic substrate colorimetric assay with a 96-well microtiter plate. RCE with various concentrations was tested for determination of interleukin (IL)-6 and IL-8 produced from KB cells stimulated with heat-inactivated *P. gingivalis*. The production of IL-6 and IL-8 was quantified using an ELISA kit. The morphological alterations in cells of *S. mutans* and *P. gingivalis* after treatment with RCE were studied using scanning electron microscopy (SEM). RCE could inhibit both Rgp (90%) and Kgp (70%) activities significantly at concentrations lower than the minimum inhibitory concentration (MIC) (2.2 mg/mL). Furthermore, the production of IL-6 and IL-8 from KB cells stimulated with *P. gingivalis* was significantly inhibited by RCE at 6 h after exposure, in a dose-dependent manner. After treatment with RCE, the morphological alterations were observed in cells of *S. mutans* and *P. gingivalis* by using SEM. The ability of RCE to inhibit gingipain activity and production of inflammatory cytokines indicates that RCE could be considered for prevention and clinical treatment for periodontitis.

Keywords: Roselle calyx extract, Rgp, Kgp, *Porphyromonas gingivalis*, IL-6, IL-8

INTRODUCTION

Periodontitis is an oral infectious disease caused by bacteria or groups of bacteria. The bacteria accumulate on the surface of the tooth and cause the destruction of periodontal connective tissue and alveolar bone, resulting in tooth loss (Haake *et al.*, 2006; Darveau, 2010). It was reported that a group of bacteria, such as *Porphyromonas gingivalis*, *Tannerella forsythia*, *Aggregatibacter actinomycetemcomitans*, *Treponema denticola*, and *Fusobacterium nucleatum* may contribute to periodontal diseases. Among these, *Porphyromonas gingivalis* (*P. gingivalis*), a Gram-negative, anaerobic, non-motile rod, is strongly associated with adult periodontitis (Slots *et al.*, 1994). This species is significantly more abundant in diseased sites than in healthy sites (Slots *et al.*, 1999; Haffajee *et al.*, 1994). The presence of *P. gingivalis* is indicative of disease progression risk and reduced levels correlates with successful clinical treatment (Haffajee *et al.*, 1994).

P. gingivalis possesses many virulence factors, including gingipains. Gingipains are trypsin-like cysteine proteinases classified into two groups, the arginine-specific cysteine protease (Rgp) and the lysine-specific cysteine protease (Kgp), based on substrate specificity. Rgp activates the blood coagulation system, associated with gingival crevicular fluid production, and initiates the inflammation process (Imamura, 2003). Kgp contributes to a tendency toward gingival bleeding (Imamura, 2003; Potempa *et al.*, 2000). The gingipains have been isolated from culture supernatants, vesicle membrane fractions, and cell extracts (Chen *et al.*, 2001; Yamanaka *et al.*, 2007).

Epithelial cells, which line mucosal surfaces and provide an important mechanical barrier, play a communication role for the host as microorganism sensors and signal providers. These cells can activate mucosal inflammatory and immune responses (Kagnoff *et al.*, 1997). It has been reported that *P. gingivalis* can bind to and invade human oral epithelial cells (Duncan *et al.*, 1993). An interaction between bacteria and epithelial cells is required for periodontal inflammation (Yumoto *et al.*, 1999). Cytokines, small soluble proteins produced by a cell, play an important role in many biological activities such as inflammation (Okada *et al.*, 1998). Inflammatory cytokines, like interleukin- (IL) 6 and IL-8, are induced during the inflammatory process. Some reports showed the involvement of IL-6 and IL-8 in the pathogenesis of tissue

destruction in periodontitis (Yumoto *et al.*, 1999; Okada *et al.*, 1998; Kang *et al.*, 2011). Since gingipains, IL-6, and IL-8 are involved in the pathogenesis of periodontitis, these components could be effective targets for prevention/control of periodontitis.

Roselle calyx extract (RCE), the extract from *Hibiscus sabdariffa* L. (Family Malvaceae) grows in tropic and subtropic areas. Roselle calyx has medicinal properties and has been reported to contain alkaloids, saponins, and flavonoids such as gossypetin, hibiscetin, and sabbaretine (Hirunpanich *et al.*, 2005; Olaleye *et al.*, 2007). It also contains hibiscus acid, hydroxybenzoic acids, flavonols, anthocyanins, and other polyphenolic compounds (Rodrigues *et al.*, 2011). RCE has been considered to have antihypertensive (Arellano *et al.*, 2004) hepatoprotective (Ali *et al.*, 2003), antihyperlipidemic (Hirunpanich *et al.*, 2006), antioxidant (Yang *et al.*, 2012), anticancer (Tsai *et al.*, 2014), and antimicrobial (Olaleye *et al.*, 2007; Nwaiwu *et al.*, 2011) properties. It is possible that the use of plant extracts with the ability to inhibit gingipains activity and cytokine production is an alternative strategy for periodontal therapy. Our previous study showed that RCE has antibacterial activity and inhibits biofilm formation. In the present study, we investigate RCE's ability to inhibit gingipains activities and cytokine production stimulated by *P. gingivalis*, and its effect on bacterial morphology.

MATERIAL AND METHODS

Preparation of the RCE

We soaked 16 g powder of dried roselles calyx in 160 mL ethyl alcohol (Wako Pure Chemical Industries Ltd) with shaking for 24 h at room temperature. After centrifugation, the extract was lyophilized. Then the extract was dissolved in phosphate-buffered saline (PBS) and the pH was adjusted to 7.0. The extract was aseptically filtered through a disposable membrane filter unit with a 0.45-µm pore size. The extract was stored at -20°C for further use.

Determination of Rgp and Kgp activity

The inhibitory effect on Rgp and Kgp of RCE at different concentrations was evaluated by using synthetic substrate colorimetric assay (Yamanaka et al., 2007; Nakatsuka et al., 2014). Benzoyl-arginine-*p*-nitroanilide (Sigma-Aldrich) and tosyl-glycine-proline-lysine-*p*-nitroanilide (Sigma-Aldrich), in 100 μ l of 0.1 M Tris-HCl (pH 8.0) containing 1 mM dithiothreitol were used as substrates (final concentration 0.5 mM) for Rgp and Kgp, respectively. The substrates were dispensed into the wells of a 96-well microtiter plate. A bacterial cell suspension (50 μ l) of *P. gingivalis*, 1×10^8 cells/ml in PBS and RCEs at different concentrations, were added to the substrate and incubated at 37°C for 50 min. The optical density, OD, of each well was measured by microtiter plate reader at a wavelength of 405 nm (A_{405}). Relative enzymatic activity was determined as follows: $[(A_{405} \text{ with bacterial cells and RCE} - A_{405} \text{ of control}) / (A_{405} \text{ with bacterial cells} - A_{405} \text{ of control})] \times 100$. Degradation obtained in the absence of the RCE was given a value of 100%.

Determination of IL-6 and IL-8 production

KB cells (a human mouth epithelial cell line) were grown in a 5% CO₂ incubator at 37°C in Dulbecco's modified Eagle's medium (DMEM, Sigma-Aldrich, USA) supplemented with 10% fetal bovine serum (FBS), penicillin (100 U/ml), streptomycin (100 μ g/ml), and amphotericin B (100 μ g/ml). After washing twice with PBS, the cells were detached from the cultured plate and then diluted to obtain 1×10^5 /ml. A cell suspension (100 μ l) was cultured in a 96-well plate and incubated to about 90% - 100% confluence. Bacterial cells of *P. gingivalis* (1×10^8 cfu) were suspended in serum-free DMEM and heat-inactivated at 80°C for 30 min before infection of KB cells. RCE in various concentrations and 60 μ l of the bacterial suspension were incubated with KB cells at a multiplicity of infection (MOI) of 200 at 37°C in 5% CO₂. After 6 h, the supernatants were collected and stored at -20°C for cytokine assays. The levels of cytokine in the culture supernatant were determined by ELISA kit (Thermo, USA) according to the manufacturer's instructions. Briefly, the lyophilized standard or RCE was placed on a 96-well strip plate precoated with anti-human cytokine. Afterward, biotinylated antibody reagent was added to each well, followed by streptavidin-horseradish peroxidase solution. Tetramethylbenzidine (TMB) substrate was added and the reaction was stopped by adding stop solution containing 0.16 M sulfuric acid. The absorbance was measured on a plate reader at 450 nm.

Examination of bacterial morphology with Scanning Electron Microscopy

A scanning electron microscopy (SEM) was performed to examine the changes of bacterial morphology after treatment with RCE. In this study, *S. mutans* ingbritt and *P. gingivalis* ATCC 33277^T were used. Bacterial suspensions were adjusted to reach OD 1.0 at 600 nm in PBS after overnight culture and washing. These suspensions were layered on cell culture coverslip disks (Thermo Scientific, Rochester, NY, USA) by soaking for 2 h in anaerobic conditions. The layered disks were washed three times and then treated either with RCE at three times minimum inhibitory concentration (MIC) (21.6 mg/mL) or with PBS for 1

h or 2 h at room temperature. After being washed, they were fixed in 2.5% glutaraldehyde in 0.1 M phosphate buffer (pH 7.4) at 4°C for 24 h. The resultant glutaraldehyde-treated layered disks were then washed and dehydrated in ethanol (50, 70, 80, and 90% successively), each for 10 min, and finally three times with 100% ethanol for 20 min each. They were dried by the CO₂ critical-point drying technique (HCP-2, Hitachi, Tokyo, Japan), coated with gold in vacuum (Eiko, IB-3 ion coater, Japan) and examined using SEM (Hitachi S-3500N, Japan).

Statistical analysis

Statistical analysis was performed using SPSS 21 software. Results were obtained in triplicate and were expressed as mean \pm standard deviation (SD). The significance of the differences between groups was determined using independent *t*-test with a value of $p < 0.05-0.01$; the effect of RCE on *P. gingivalis*-induced IL-8 expression in KB cells was determined using one-way analysis of variance (ANOVA) followed by Bonferroni post hoc test.

RESULTS

Effect on Rgp and Kgp activity

The effect of RCE on Rgp and Kgp activity was evaluated by colorimetric assay using synthetic substrates (Figure 1). The present study showed that RCE exhibited inhibitory effect on both Rgp and Kgp activity in a dose-dependent manner. RCE reduced the activity of Rgp about 60% at 0.6 mg/mL, 80% at 1.1 mg/mL, and 90% at 2.2 mg/mL. The reduction in Kgp activity was about 50% at 0.6 mg/mL, 60% at 1.1 mg/mL, and 70% at 2.2 mg/mL. The differences in gingipain activity between the untreated and treated groups were statistically significant ($p < 0.05$).

Effect on IL-6 and IL-8 production

We evaluated the effect of RCE at various concentrations on the production of IL-6 and IL-8 by KB cells stimulated with the heat-inactivated *P. gingivalis*. In Figure 2, the levels of IL-6 (Figure 2A) and IL-8 (Figure 2B) produced by KB cells were significantly reduced by treatment with RCE in a dose-dependent manner ($p < 0.01$) with similar reduction patterns.

Effect on bacterial morphology

Figure 3 shows the morphological alteration of *S. mutans* and *P. gingivalis* after treatment with RCE for 1 h (3E and G) and 2 h (3F and H) compared to the structure of the controls (3A, B, C, and D). Bacterial cells of *S. mutans* and *P. gingivalis* in the control group had regular shapes and smooth surfaces. After treatment with RCE, some *S. mutans* cells showed irregular changes such as enlargement and clumping of cells. In *P. gingivalis*, treatment with RCE caused aggregation and distortion of cells. These morphological alterations increased after 2-h treatment.

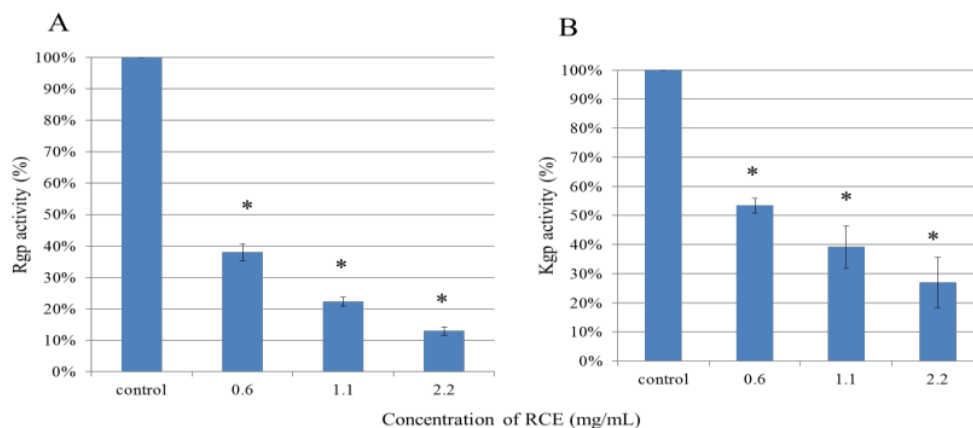


Figure 1 Effect of roselle calyx extract on Rgp (A) and Kgp (B) activity of *P. gingivalis*. The data was expressed with the mean \pm SD in triplicate experiment. * $p < 0.05$; significantly different from the control. Control: absence of RCE; Rgp: Arg-gingipain; Kgp: Lys-gingipain; RCE: roselle calyx extract.

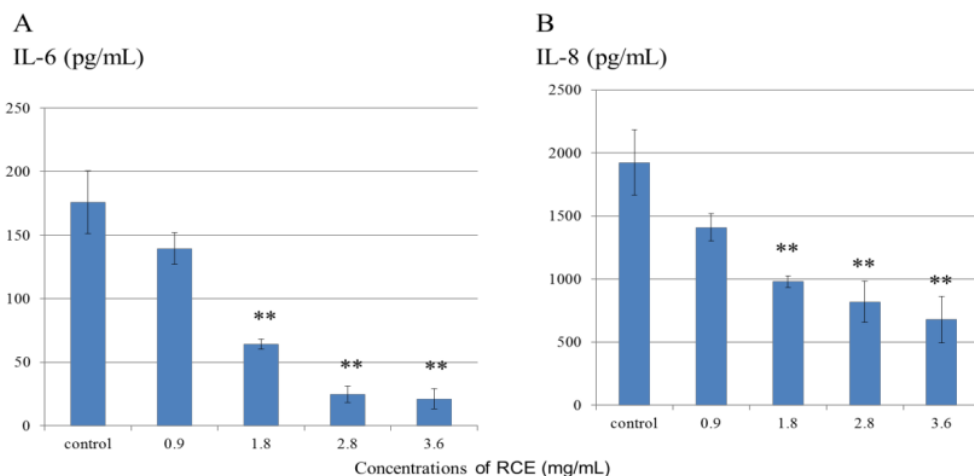


Figure 2 Effect of RCE on *P. gingivalis*-induced IL-6 (A) and IL-8 (B) expression in KB cells. Control: PBS, *P. gingivalis* was used at MOI 200. ** $p \leq 0.01$: significantly different from the control. The data is expressed with the mean \pm SD in triplicate experiment.

DISCUSSION

Many bacterial species have been identified in periodontal pockets of patients; among those *P. gingivalis* is frequently isolated from the lesions of chronic periodontitis. It was reported that *P. gingivalis* produced major proteinases, Arg-specific gingipain (Rgp) and Lys-specific gingipain (Kgp), as virulence factors (Kataoka et al., 2014). Gingipains play a key role in the pathogenic function of *P. gingivalis*. They have the ability to degrade a number of host proteins significant for bacterial growth and metabolism, and are responsible for dysregulation of host defensive inflammatory reaction and failure of the host to eliminate bacteria (Olsen et al., 2014).

Gingipains are located on cell surfaces and in culture supernatants, and are related to extracellular vesicles (Chen et al., 2001). The gingipain-loaded outer membrane vesicles may contribute to tissue destruction in periodontal diseases by serving as a vehicle for the antigens and active proteases (Nakao et al., 2014). When separate proteinases with arginine and lysine specificity were isolated from a high molecular mass fraction of the *P. gingivalis* culture fluid, the arginine- and lysine-gingipains were found to contain a hemagglutinin complex. This hemagglutinin may be important in the uptake of hemin via hemagglutination and subsequent hemolysis of erythrocytes (Pike et al., 1994). Arginine-specific cysteine proteinase from the culture supernatant of *P. gingivalis* has the ability to disrupt the functions of polymorphonuclear leukocytes. Further, the enzyme was suggested as a major virulence factor from *P. gingivalis* in the progression of periodontal diseases due to direct destruction of periodontal tissue components and the disruption of the normal host defense mechanism (Kadowaki et al., 1994). The culture supernatant from *P. gingivalis* also induces the disruption of the adhesion and proliferation activities in the endothelial cells; Rgp and Kgp are responsible for these activities (Baba et al., 2002). It is clear that while gingipains are important for the survival of bacteria, they are also pathogenic to the host. Therefore, both Rgp and Kgp activities should be potential therapeutic targets (Olsen et al., 2014).

Results in our study indicate that RCE inhibited the activity of Rgp and Kgp at a sub-MIC concentration (Figure 1). Our previous study reported that the MIC of *P. gingivalis* is 7.2 mg/mL (Sulistyani et al., 2016). The concentration of RCE used in this study was sub-MIC, therefore the decrease of Rgp and Kgp activity is not because of inhibition of bacterial growth, but because of inactivity of Rgp and Kgp. It was reported that RCE contains polyphenolic compounds (Rodrigues et al., 2011). Previous study showed that cranberry polyphenol was found to inhibit Arg- and Lys-gingipain activities in a dose-dependent manner (Yamanaka et al., 2007). Polyphenols from *Myrothamnus flabellifolia* Welw (MF) exhibit inhibition of *P. gingivalis* adhesion to epithelial cells, with strong influence against Arg-gingipain. In *P. gingivalis*, the gingipain proteases are suitable targets for polyphenol compounds. Proanthocyanidins react with bacterial surface proteins, leading to an unspecific cross-linking or denaturing effects of adhesion proteins and resulting in inhibition of Rgp (Löhr et al., 2011). From these data, we assume that the inhibition effect of RCE on Rgp and Kgp may be due to polyphenol compounds. However, MF exhibits high toxicity, which may limit its clinical use, whereas RCE is safe to use.

Periodontopathogens can promote host inflammatory response by secretion of inflammatory mediators. The association of inflammatory mediators and local tissue destruction in periodontitis has been reported (Okada et al., 1998;

Birkedal, 1993; Bodet et al., 2007). IL-6 is a pro-inflammatory cytokine that has been related to the pathogenesis of periodontal disease. IL-6 expression is increased at sites of periodontal inflammation. It has been suggested as a marker for periodontal disease activity (Irwin et al., 1998) and is involved in bone resorption (Nakashima et al., 2000). It was reported that IL-8, expressed in epithelial cells and macrophages, was observed in gingival inflammation. IL-8 may play an important role in the pathogenesis of periodontitis due to its pro-inflammatory and neutrophil chemotactic properties (Okada et al., 1998; Kim et al., 2006). The neutrophils are the first line of defense against periodontopathic bacteria. Continuous and excessive IL-8-mediated chemotactic and activation effects on neutrophils may contribute to local destruction of periodontal tissues (Okada et al., 1998).

In the present study, we analyzed whether KB cells stimulated by the heat-inactivated *P. gingivalis* for 6 h could produce IL-6 and IL-8. Previous study also reported that KB cells showed cytokine responses after infection with *P. gingivalis*, strongly comparable to that induced by *E. coli* in vitro (Sandros et al., 2000). The ability of epithelial cells to provoke the cytokine response was related to their adhesive and invasive capacity. In a comparative experiment using a primary culture of pocket epithelium and KB cells, the result revealed that cytokine responses after *P. gingivalis* and *E. coli* infection were similar.^[36] In addition, in vivo study showed that *P. gingivalis* was more potent than *A. actinomycetemcomitans* in inducing proinflammatory cytokines expression. Animals infected with *S. gordonii*, considered a non-pathogenic bacteria, also induced IL-1 β and TNF α but not IL-6 (Kesavalu et al., 2002).

Our study exhibited that the production of IL-8 (1926 pg/mL) is higher than that of IL-6 (176 pg/mL). Our result is in accordance with previous studies; Yumoto et al. (1999) reported that the level of IL-8 production (approx. 2300 pg/mL) by KB cells stimulated with *E. corrodens* for 8 h is higher than the level of IL-6 production (approx. 98 pg/mL). The level of IL-6 increased 0.5 h after stimulation; the concentration increased constantly over time and it increased significantly within 4 h. In contrast, the level of IL-8 increased 4 h after stimulation, and increased aggressively from that point. The production of IL-8, higher than that of IL-6, was also shown in KB cells infected by *F. Nucleatum* (Kang et al., 2011).

The level of IL-6 and IL-8 response in KB cells induced by heat-inactivated *P. gingivalis* was reduced after treatment with RCE at all concentrations used in this study. No cytotoxic effects were detected by WST-1 assay in KB cells treated by RCE in those concentrations for 6 h (data not shown). It is indicated that the reduction of IL-6 and IL-8 production in KB cells treated by RCE is not associated with cell toxicity. In addition, treatment of uninfected KB cells with RCE did not affect cytokine responses (data not shown). It is shown that treatment by RCE does not affect KB cell production of IL-6 and IL-8.

It was reported that RCE contains polyphenols, with flavonoids being the largest of the dietary phenolics group (Kim et al., 2006; Carretero et al., 2008; Medina et al., 2009). Flavonoids have anti-inflammatory effects. Previous study showed that the non-dialyzable material (NDM) cranberry fraction, rich in polyphenolic compounds, could inhibit inflammatory mediator production (Bodet et al., 2007). The mechanism of inhibition may be via a down-regulation of the activator protein-1 (AP-1) activity. AP-1 and nuclear factor- κ B (NF- κ B) are known pro-inflammatory transcription factors that induce the production of cytokines and other pro-inflammatory molecules (Verri et al., 2012). AP-1 and NF- κ B cooperatively regulate the synthesis of IL-6, IL-8, and PGE₂ in the gingival

connective tissue of patients with periodontitis (Bodet et al., 2007; Kida et al., 2005). Epigallocatechin gallate (EGCG), the major polyphenol component of green tea, inhibits IL-1 β -induced IL-8 production of nasal fibroblast and A549 epithelial cells. The activity might be associated with an intervening reactive oxygen species (ROS) pathway (Kim et al., 2006). Because the main compound of RCE is a flavonoid, we suggested that the flavonoid is involved in the inhibitory effect on IL-6 and IL-8 in KB cells induced by heat-inactivated *P. gingivalis*. The use of flavonoids as an anti-inflammatory may represent a better pharmacological approach compared to current therapies because flavonoids do not act by a single mechanism and present a better side effect profile, reducing such effects as gastrointestinal and renal lesions (Kida et al., 2005).

The morphologic alteration of oral bacterial species by treatment with RCE has not been reported previously. In this study, we investigated the effect of RCE on *S. mutans* and *P. gingivalis* using SEM. The layered disks of bacteria were treated with RCE at three times MIC for 1 h or 2 h under appropriate conditions. We used RCE at this concentration because our purpose was to observe morphologic alterations on the bacteria rather than a reduction in bacteria. In addition, using a concentration of RCE equal to MBC may have resulted in bacteria detaching from coverslip disks when dead bacteria were processed and removed. The SEM images illustrate the detrimental effects of RCE on the bacteria. *S. mutans* and *P. gingivalis* in the control group had regular shape and smooth surfaces. After 1 h of treatment, some cells of *S. mutans* showed irregular shape or clumping. After 2 h, some bacteria showed variation in size, some cells were expansive, and the clumping of cells was more evident than at 1 h of treatment. Treatment by RCE on *P. gingivalis* for 1 h caused aggregation and irregular cell outlines. These patterns were increased on cells treated by RCE for 2 h.

It has been reported that RCE contains phenolic compounds, such as flavonoid. The target site of flavonoid might be on membrane cell walls (Cowan, 1999). Our SEM result was in accordance with previous study and showed catechin, the polyphenol compound, caused leakage of intramembranous materials, strong aggregation, and bacterial cell pointing to the likely possibility of membrane fusion. It is well established that membrane fusion by polyethylene glycol, calcium ion, or virions has consistently resulted in the leakage of intramembranous materials and aggregation (Ikigai et al., 1993). SEM analysis of oral microorganisms treated with tea polyphenol showed major structural cell surface changes and irregular forms, with aggregates among cells (Cho et al., 2010). It was reported that damage to bacterial cells might manifest in a few ways, one of which was loss of membrane integrity resulting in leakage of essential intracellular constituents such as inorganic phosphate and proteins. The target of phenols was membrane integrity and leakage (Denyer et al., 1998). From the SEM observations, it seems that RCE binds to the cell membrane, penetrates into the phospholipid bilayer, and disrupts the membrane integrity, resulting in membrane leakage and cell aggregation. We suggested after aggregation, the bacteria will lose integrity and disintegrate, resulting in death. However, the mechanisms of RCE on oral bacteria remains unclear, therefore experiments need to be developed.

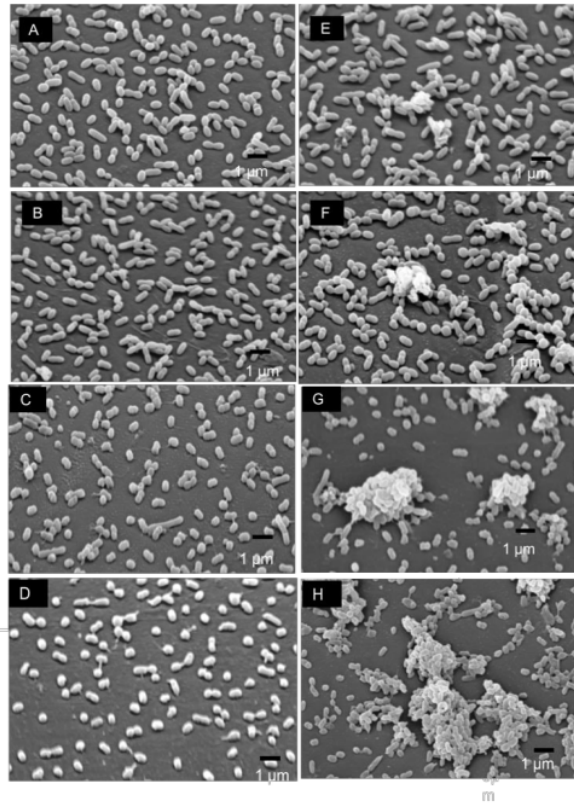


Figure 3 Scanning electron microscope *S. mutans* (A, B, E and F) and *P. gingivalis* (C, D, G and H). A and C: PBS 1 h; B and D: PBS 2 h; E and G: treatment with RCE for 1 h; D and H: treatment with RCE for 2 h.

CONCLUSION

Based on our results, RCE could inhibit the activity of Rgp and Kgp, the major proteases of *P. gingivalis*. Moreover, RCE inhibited IL-6 and IL-8 production in KB cells stimulated with the heat-inactivated *P. gingivalis*. From the SEM observations, we suggested that RCE binds to the cell membrane, resulting in membrane leakage and cell aggregation. These data suggest that RCE might have beneficial effect on prevention and clinical treatment for periodontitis.

Acknowledgments: We thank Dr. Yuko Nakatsuka and Akio Maruyama (Health Sciences University of Hokkaido) for technical support. Part of this work was supported by scholarship from Futoku Foundation and Hokkaido Gas Co. Ltd.

REFERENCES

- Ali, B.H., Mousa, H.M., & Mougny, S.E. 2003. The effect of a water extract and anthocyanins of *Hibiscus sabdariffa* L. on paracetamol-induced hepatotoxicity in rats. *Phytother. Res.* 3(17), 56-59. <http://dx.doi.org/10.1002/ptr.1084>
- Arellano, A.H., Romero, S.F., Soto, M.A.C., & Tortoriello, J. 2004. Effectiveness and tolerability of a standardized extract from *Hibiscus sabdariffa* in patients with mild to moderate hypertension: a controlled and randomized clinical trial. *J. Pharm. Med.* 11, 375-382. <http://dx.doi.org/10.1016/j.phymed.2004.04.001>
- Baba, A., Kadowaki, T., Asao, T., & Yamamoto, K. 2002. Roles for Arg- and Lys- Gingipains in the disruption of cytokine responses and loss of viability of human endothelial cells by *Porphyromonas gingivalis* infection. *Biol. Chem.* 383, 1223-1230. <http://dx.doi.org/10.1515/bc.2002.135>
- Birkedal-Hansen, H. 1993. Role of cytokines and inflammatory mediators in tissue destruction. *J. Periodont Res.* 28, 500-510. <http://dx.doi.org/10.1111/j.1600-0765.1993.tb02113.x>
- Bodet, C., Chandad, F., & Grenier, D. 2007. Cranberry components inhibit interleukin-6, interleukin-8, and prostaglandin E₂ production by lipopolysaccharide-activated gingival fibroblast. *Eur J Oral Sci.* 115, 64-70. <http://dx.doi.org/10.1111/j.1600-0722.2007.00415.x>
- Caretero, A.S., Mejia, M.A.P., Ramirez, S.C., Beltran, R., Villaverde, C.A., Joven, J., & Gutiérrez, A.F. 2008. Selective extraction, separation, and identification of anthocyanins from *Hibiscus sabdariffa* L. using solid phase

- extraction-capillary electrophoresis-mass spectrometry (time-of-flight/ion trap). *Electrophoresis*, 29, 2852-2861. <http://dx.doi.org/10.1002/elps.200700819>
- Chen, T., Nakayama, K., Belliveau, L., & Duncan, M.J. 2001. *Porphyromonas gingivalis* gingipains and adhesion to epithelial cells. *Infection and immunity*, 3048-3056. <http://dx.doi.org/10.1128/iai.69.5.3048-3056.2001>
- Cho, Y.S., Oh, J.J., & Oh, K.H. 2010. Antimicrobial activity and biofilm formation inhibition of green tea polyphenols on human teeth. *Biotechnology and Bioengineering*, 15, 359-364. <http://dx.doi.org/10.1007/s12257-009-0195-8>
- Cowan, M.M. 1999. Plant products as antimicrobial agents. *Clin Microbiol Rev*, 12(4), 564-582
- Darveau, R.P. 2010. Periodontitis: a polymicrobial disruption of host homeostasis. *Nature Reviews/Microbiology* 8, 481-490. <http://dx.doi.org/10.1038/nrmicro2337>
- Denyer, S.P., & Stewart, G.S.A.B. 1998. Mechanisms of action of disinfectants. *International Biodeterioration & Biodegradation*, 41, 261-268. [http://dx.doi.org/10.1016/s0964-8305\(98\)00023-7](http://dx.doi.org/10.1016/s0964-8305(98)00023-7)
- Duncan, M.J., Nakao, S., Skobe, Z., & Xie, H. 1993. Interactions of *Porphyromonas gingivalis* with epithelial cells. *Infection and immunity*, 61(5), 2260-2265. <http://dx.doi.org/10.1128/iai.61.5.2260-2265.1993>
- Haake, S.K., Meyer, D.H., Taylor, P.M.F., & Schenkein, H. 2006. *Periodontal diseases*. In: Lamont RJ, Burne RA, Lantz MS, Leblanc DJ. *Oral Microbiology and immunology*. Washington DC: ASM Press, 253-294
- Haffajee, A.D., & Socransky, S.S. 1994 Microbial etiological agents of destructive periodontal diseases. *Periodontology* 2000, 5, 78-111. <http://dx.doi.org/10.1111/j.1600-0757.1994.tb00020.x>
- Hirunpanich, V., Utaipat, A., Morales, N.P., Bunyaphrathasara, N., Sato, H., Herusale, A., & Suthisissang, C. 2005. Antioxidant effects of aqueous extracts from dried calyx of *Hibiscus sabdariffa* Linn. (Roselle) in vitro using rat low-density lipoprotein (LDL). *Biol. Pharm. Bull.*, 28(3), 481-484. <http://dx.doi.org/10.1248/bpb.28.481>
- Hirunpanich, V., Utaipat, A., Morales, N.P., Bunyaphrathasara, N., Sato, H., Herusale, A., & Suthisissang, C. 2006. Hypocholesterolemic and antioxidant effects of aqueous extracts from the dried calyx of *Hibiscus sabdariffa* L. in hypercholesterolemic rats. *Jethpharm*, 103, 252-260. <http://dx.doi.org/10.1016/j.jep.2005.08.033>
- Ikigai, H., Nakae, T., Hara, Y., & Shimamura, T. 1993. Bactericidal catechins damage the lipid bilayer. *Biochimica et Biophysica Acta*, 1147, 132-136. [http://dx.doi.org/10.1016/0005-2736\(93\)90323-r](http://dx.doi.org/10.1016/0005-2736(93)90323-r)
- Imamura, T. 2003 The role of gingipains in the pathogenesis of periodontal disease. *J Periodontol*, 74 (1), 111-118. <http://dx.doi.org/10.1902/jop.2003.74.1.111>
- Irwin, C.R., & Myrillas, T.T. 1998. The role of IL-6 in the pathogenesis of periodontal diseases. *Oral Diseases*, 4, 43-47. <http://dx.doi.org/10.1111/j.1601-0825.1998.tb00255.x>
- Kadowaki, T., Yoneda, M., Okamoto, K., Maeda, K., & Yamamoto, K. 1994. Purification and characterization of novel Arginine-specific Cysteine Proteinase (Argingipain) involved in the pathogenesis of periodontal disease from the culture supernatant of *Porphyromonas gingivalis*. *The Journal of Biological Chemistry*, 269 (33), 21371-21378
- Kagnoff, M.F., & Eckmann, L. 1997. Epithelial cells as sensors for microbial infection. *J Clin Invest*, 100, 6-10. <http://dx.doi.org/10.1172/jci119522>
- Kang, M.S., Lim, H.S., Kim, S.M., Lee, H.C., & Oh, J.S. 2011. Effect of *Weissella cibaria* on *Fusobacterium nucleatum* induced interleukin-8 production in KB cells. *Journal of Bacteriology and virology*, 41(1), 9-18. <http://dx.doi.org/10.4167/jbv.2011.41.1.9>
- Kataoka, S., Baba, A., Suda, Y., Takii, R., Hashimoto, M., Kawakubo, T., Asao, T., Kadowaki, T., & Yamamoto, K. 2014. A novel potent dual inhibitor of Arg-gingipains and Lys-gingipains as a promising agent for periodontal disease therapy. *FASEB J*, 28: 1-15. <http://dx.doi.org/10.1096/fj.14-252130>
- Kesavalu, L., Chandrasekar, B., & Ebersole, J.L. 2002. In vivo induction of proinflammatory cytokines in mouse tissue by *Porphyromonas gingivalis* and *Actinobacillus actinomycetemcomitans*. *Oral Microbiol Immunol*, 17, 177-180. <http://dx.doi.org/10.1034/j.1399-302x.2002.170307.x>
- Kida, Y., Kobayashi, M., Suzuki, T., Takeshita, A., Okamoto, Y., Hanazawa, S., Yasui, T., & Hasegawa, K. 2005. Interleukin-1 stimulates cytokines, prostaglandin E₂ and matrix metalloproteinase-1 production via activation of MAPK/AP-1 and NF-κB in human gingival fibroblasts. *Cytokine*, 29(4), 159-168. <http://dx.doi.org/10.1016/j.cyto.2004.10.009>
- Kim, I.B., Kim, D.Y., Lee, S.J., Sun, M.J., Lee, M.S., Li, H., Cho, J.J., & Park, C.S. 2006. Inhibition of IL-8 production by green tea polyphenols in human nasal fibroblasts and A 549 epithelial cells. *Biol Pharm Bull*, 29(6), 1120-1125. <http://dx.doi.org/10.1248/bpb.29.1120>
- Löhr, G., Beikler, T., Podbielski, A., Standar, K., & Hensel, A. 2011. Polyphenols from *Myrothamnus flabellifolia* welw. Inhibit in vitro adhesion of *Porphyromonas gingivalis* and exert anti-inflammatory cytoprotective effects in KB cells. *J Clin Periodontol*, 38, 457-469. <http://dx.doi.org/10.1111/j.1600-051x.2010.01654.x>
- Medina, I.C.R., Debon, R.B., Molina, V.M., Villaverde, C.A., Joven, J., Menendez, J.A., Carretero, A.S. & Gutierrez. 2009. Direct characterization of aqueous extract of *Hibiscus sabdariffa* using HPLC with diode array detection coupled to ESI and ion trap MS. *J. Sep. Sci.*, 32, 3441-3448. <http://dx.doi.org/10.1002/jssc.200900298>
- Nakao, R., Takashiba, S., Kosono, S., Yoshida, M., Watanabe, H., Ohnishi, M., & Senpuku, H. 2014. Effect of *Porphyromonas gingivalis* outer membrane vesicles on gingipain-mediated detachment of cultured oral epithelial cells and immune responses. *Microbes and Infection*, 16, 6-16. <http://dx.doi.org/10.1016/j.micinf.2013.10.005>
- Nakashima, T., Kobayashi, Y., Yamasaki, S., Kawakami, A., Eguchi, K., & Sasaki, H. 2000. Protein expression and functional difference of membrane-bound and soluble receptor activator of NF-κB ligand: modulation of the expression by osteotropic factors and cytokines. *Biochem. Biophys. Res. Commun.*, 275, 768-775. <http://dx.doi.org/10.1006/bbrc.2000.3379>
- Nakatsuka, Y., Nagasawa, T., Yumoto, Y., Nakazawa, F., & Furuichi, Y. 2014. Inhibitory effects of sword bean extract on alveolar bone resorption induced in rats by *Porphyromonas gingivalis* infection. *J Periodon Res*, 49, 801-809. <http://dx.doi.org/10.1111/jre.12166>
- Nwaiwu, N.E., Mshelia, F., & Raufu, I.A. 2011. Antimicrobial activities of crude extracts of *Moringa oleifera*, *Hibiscus sabdariffa* and *Hibiscus esculentus* seeds against some enterobacteria. *J. Appl. Phytotechnol. Environ. Sanit.*, 1(1), 11-16. <http://dx.doi.org/10.5897/jmpr1.1.621>
- Okada, H., & Murakami, S. 1998. Cytokine expression in periodontal health and disease. *Crit Rev Oral Biol Med*, 9(3), 248-266. <http://dx.doi.org/10.1177/10454411980090030101>
- Olaleye, & Tolulope, M. 2007. Cytotoxicity and antibacterial activity of methanolic extract of *Hibiscus sabdariffa*. *Journal of Medicinal Plants Research*, 1(1), 009-013
- Olsen, I., & Potempa, J. 2014. Strategies for the inhibition of gingipains for the potential treatment of periodontitis and associated systemic diseases. *Journal of Oral Microbiology*, 6: 24800. <http://dx.doi.org/10.3402/jom.v6.24800>
- Pike, R., McGraw, W., Potempa, J., & Travis, J. 1994. Lysine- and Arginine-specific proteinases from *Porphyromonas gingivalis*, isolation, characterization, and evidence for the existence of complexes with hemagglutinins. *The Journal of Biological Chemistry*, 269 (1), 406-411
- Potempa, J., Banbula, A., & Travis, J. 2000. Role of bacterial proteinases in matrix destruction and modulation of host responses. *Periodontology* 2000, 24, 153-192. <http://dx.doi.org/10.1034/j.1600-0757.2000.2240108.x>
- Rodrigues, M.M.R., Plaza, M.L., Azeredo, A., Balaban, M.O., & Marshall, M.R. 2011. Phytochemical and phytochemical properties of cold and hot water extraction from *Hibiscus sabdariffa*. *Journal of Food Science*, 76(3), 428-435. <http://dx.doi.org/10.1111/j.1750-3841.2011.02091.x>
- Sandros, J., Karlsson, C., Lappin, D.F., Madianos, P.N., Kenane, D.F., & Papanon, P.N. 2000. Cytokine responses of oral epithelial cell to *Porphyromonas gingivalis* infection. *J Dent Res*, 79(10), 1808-1814. <http://dx.doi.org/10.1177/00220345000790101301>
- Slots, J., & Ting, M. 1999. Actinobacillus actinomycetemcomitans and *Porphyromonas gingivalis* in human periodontal disease: occurrence and treatment. *Periodontology* 2000, 20, 82-121. <http://dx.doi.org/10.1111/j.1600-0757.1999.tb00159.x>
- Sulistyani, H., Fujita, M., Miyakawa, H., & Nakazawa, F. 2016. Effect of roselle calyx extract on *in vitro* viability and biofilm formation ability of oral pathogenic bacteria. *Asian Pacific Journal of Tropical Medicine*, 9(2), 119-124. <http://dx.doi.org/10.1016/j.apjtm.2016.01.020>
- Tsai, T.C., Huang, H.P., Chang, Y.C., & Wang, C.J. 2014. An anthocyanin-rich extract from *Hibiscus sabdariffa* Linnaeus inhibits N-Nitrosomethylurea-induced leukemia in rats. *J. Agric. Food Chem.*, 62, 1572-1580. <http://dx.doi.org/10.1021/jf405235j>
- Verri Jr, W.A., Vincentini, F.T.M.C., Baracat, M.M., Georgetti, S.R., Cardoso, R.D.R., Cunha, T.M., Ferreira, S.H., Cunha, F.Q., Fonseca, M.J.V., & Casagrande, R. 2012. Flavonoids as anti-inflammatory and analgesic drugs: Mechanisms of action and perspectives in the development of pharmaceutical forms. In: Rahman A. *Studies in Natural Products Chemistry: Bioactive Natural Products* (Part P). Elsevier B.V., 297-330. <http://dx.doi.org/10.1016/b978-0-444-53836-9.00026-8>
- Yamanaka, A., Kouchi, T., Kasai, K., Kato, T., Ishihara, K., & Okuda, K. 2007. Inhibitory effect of cranberry polyphenol on biofilm formation and cysteine proteases of *Porphyromonas gingivalis*. *J Periodont Res*, 42, 589-592. <http://dx.doi.org/10.1111/j.1600-0765.2007.00982.x>
- Yang, L., Gou, Y., Zhao, T., Zhao, J., Li, F., Zhang, B., & Wu, X. 2012. Antioxidant capacity of extracts from calyx fruits of roselle (*Hibiscus sabdariffa* L.). *Afr. J. Biotechnol.*, 11(17), 4063-4068. DOI: 10.5897/AJB11.2227
- Yumoto, H., Nakae, H., Fujinaka, K., Ebisu, S., & Matsuo, T. 1999. Interleukin-6 (IL-6) and IL-8 are induced in human oral epithelial cells in response to exposure to periodontopathic *Eikenella corrodens*. *Infection and immunity*, 67(1), 384-394

Effect of Roselle calyx Extract on Gingipain Activity, Production of Inflammatory Cytokines, and Oral Bacterial Morphology

ORIGINALITY REPORT

23%
SIMILARITY INDEX

17%
INTERNET SOURCES

17%
PUBLICATIONS

10%
STUDENT PAPERS

PRIMARY SOURCES

1	mukogawa.repo.nii.ac.jp Internet Source	1%
2	Maria A. Torres, Diego F. Gualtero, Gloria I. Lafaurie, Marta R. Fontanilla. " induces a proatherosclerotic response in human endothelial cells in a three - dimensional collagen scaffold model ", Molecular Oral Microbiology, 2020 Publication	1%
3	Mark Feldman. "Interference of Cranberry Constituents in Cell-Cell Signaling System of Vibrio harveyi", Current Microbiology, 10/2009 Publication	1%
4	edocs.maseno.ac.ke Internet Source	1%
5	www.cjcu.jlu.edu.cn Internet Source	1%
6	pjmhsonline.com Internet Source	<1%

7	Mashima, Izumi, and Futoshi Nakazawa. "The influence of oral Veillonella species on biofilms formed by Streptococcus species", <i>Anaerobe</i> , 2014. Publication	<1 %
8	Submitted to North West University Student Paper	<1 %
9	www.koreascience.or.kr Internet Source	<1 %
10	Andreas Sfakianakis, Charles E. Barr, Don Kreutzer. " Mechanisms of -Induced Expression of Interleukin-8 in Gingival Epithelial Cells ", <i>Journal of Periodontology</i> , 2001 Publication	<1 %
11	H. J. Serrage, P. R. Cooper, W. M. Palin, P. Horstman, M. Hadis, M. R. Milward. "Photobiomodulation of oral fibroblasts stimulated with periodontal pathogens", <i>Lasers in Medical Science</i> , 2021 Publication	<1 %
12	Parkar, M.. "IL-6 EXPRESSION BY ORAL FIBROBLASTS IS REGULATED BY ANDROGEN", <i>Cytokine</i> , 199808 Publication	<1 %
13	Nermeen Mohammed Faheem, Tarek Mohamed Ali. "The counteracting effects of	<1 %

(-)-Epigallocatechin-3-Gallate on the immobilization stress-induced adverse reactions in rat pancreas", Cell Stress and Chaperones, 2020

Publication

14

coek.info

Internet Source

<1 %

15

www.jbc.org

Internet Source

<1 %

16

Submitted to BPP College of Professional Studies Limited

Student Paper

<1 %

17

Submitted to Petroleum Research & Development Center

Student Paper

<1 %

18

Prenesti, E.. "Antioxidant power quantification of decoction and cold infusions of Hibiscus sabdariffa flowers", Food Chemistry, 2007

Publication

<1 %

19

Submitted to Universiti Putra Malaysia

Student Paper

<1 %

20

Submitted to University of Newcastle upon Tyne

Student Paper

<1 %

21

Submitted to University of Western Australia

Student Paper

<1 %

22	lib.dr.iastate.edu Internet Source	<1 %
23	www.scilit.net Internet Source	<1 %
24	www.us.oup.com Internet Source	<1 %
25	shura.shu.ac.uk Internet Source	<1 %
26	Yun-Seok Cho, Jay Jooyoung Oh, Kye-Heon Oh. "Antimicrobial activity and biofilm formation inhibition of green tea polyphenols on human teeth", <i>Biotechnology and Bioprocess Engineering</i> , 2010 Publication	<1 %
27	hdl.handle.net Internet Source	<1 %
28	www.pesca.sp.gov.br Internet Source	<1 %
29	www.scopemed.org Internet Source	<1 %
30	S.P. Denyer, G.S.A.B. Stewart. "Mechanisms of action of disinfectants", <i>International Biodeterioration & Biodegradation</i> , 1998 Publication	<1 %
31	tsukuba.repo.nii.ac.jp Internet Source	<1 %

<1 %

32

www.freepatentsonline.com

Internet Source

<1 %

33

zenodo.org

Internet Source

<1 %

34

worldwidescience.org

Internet Source

<1 %

35

www.sciencegate.app

Internet Source

<1 %

36

Submitted to Universiti Teknologi Malaysia

Student Paper

<1 %

37

Y. Fujimura, H. Hotokezaka, N. Ohara, M. Naito, E. Sakai, M. Yoshimura, Y. Narita, H. Kitaura, N. Yoshida, K. Nakayama. "The Hemoglobin Receptor Protein of Porphyromonas gingivalis Inhibits Receptor Activator NF- B Ligand-Induced Osteoclastogenesis from Bone Marrow Macrophages", Infection and Immunity, 2006

Publication

<1 %

38

s3.amazonaws.com

Internet Source

<1 %

39

synapse.koreamed.org

Internet Source

<1 %

40 Kim, In-Bae, Dong-Young Kim, Su-Jin Lee, Min-Jung Sun, Myung-Sook Lee, Hua Li, Jeong-Je Cho, and Cheung-Seog Park. "Inhibition of IL-8 Production by Green Tea Polyphenols in Human Nasal Fibroblasts and A549 Epithelial Cells", Biological & Pharmaceutical Bulletin, 2006.
Publication

41 Submitted to University of Leicester
Student Paper

42 JORG ELLER, JOSÉ R. LAPA E SILVA, LEONARD W. POULTER, HARTMUT LODE, PETER J. COLE. "Cells and Cytokines in Chronic Bronchial Infection", Annals of the New York Academy of Sciences, 1994
Publication

43 Submitted to University of Birmingham
Student Paper

44 www.karger.com
Internet Source

45 "Pathogenesis of Periodontal Diseases", Springer Science and Business Media LLC, 2018
Publication

46 Chikoo Cherian, J. Jannet Vennila, Leena Sharan. "Marine bromophenols as an effective inhibitor of virulent proteins

(peptidyl arginine deiminase, gingipain R and hemagglutinin A) in *Porphyromonas gingivalis*", *Archives of Oral Biology*, 2019

Publication

47

Napimoga, Marcelo H., Juliana T. Clemente-Napimoga, Cristina G. Macedo, Fabiana F. Freitas, Rafael N. Stipp, Felipe A. Pinho-Ribeiro, Rubia Casagrande, and Waldiceu A. Verri. "Quercetin Inhibits Inflammatory Bone Resorption in a Mouse Periodontitis Model", *Journal of Natural Products*, 2013.

Publication

<1 %

48

pubs.rsc.org
Internet Source

<1 %

49

www.aimspress.com
Internet Source

<1 %

50

www.7switch.com
Internet Source

<1 %

51

H. Xie, W. O. Chung, Y. Park, R. J. Lamont. "Regulation of the *Porphyromonas gingivalis* fimA (Fimbrillin) Gene", *Infection and Immunity*, 2000

Publication

<1 %

52

aac.asm.org
Internet Source

<1 %

53

bmcmedinformdecismak.biomedcentral.com
Internet Source

<1 %

54	data.nanet.go.kr Internet Source	<1 %
55	fist.ump.edu.my Internet Source	<1 %
56	geneticsmr.com Internet Source	<1 %
57	repositorioslatinoamericanos.uchile.cl Internet Source	<1 %
58	repository.universitasbumigora.ac.id Internet Source	<1 %
59	revistadepedagogia.org Internet Source	<1 %
60	www.nrcresearchpress.com Internet Source	<1 %
61	www.tandfonline.com Internet Source	<1 %
62	Submitted to Boston University Student Paper	<1 %
63	M J Saldanha. "Outcome of implementing the national services framework guidelines for diabetic retinopathy screening: results of an audit in a primary care trust", British Journal of Ophthalmology, 1/1/2006 Publication	<1 %

64 Pan, C, X Xu, L Tan, L Lin, and Y Pan. "The effects of *Porphyromonas gingivalis* on the cell cycle progression of human gingival epithelial cells", Oral Diseases, 2013.

Publication

<1 %

65 advances.sciencemag.org

Internet Source

<1 %

66 fulviofrisone.com

Internet Source

<1 %

67 koreascience.or.kr

Internet Source

<1 %

68 www.besjournal.com

Internet Source

<1 %

69 D. Trombetta, F. Castelli, M. G. Sarpietro, V. Venuti, M. Cristani, C. Daniele, A. Saija, G. Mazzanti, G. Bisignano. "Mechanisms of Antibacterial Action of Three Monoterpenes", Antimicrobial Agents and Chemotherapy, 2005

Publication

<1 %

70 Eichi Tsuruga. "Expression of fibrillins and tropoelastin by human gingival and jreiodontal ligament fibroblasts *in vitro*", Journal of Periodontal Research, 01/2002

Publication

<1 %

71 Helene Guyodo. "Colocalization of Porphyromonas gingivalis with CD4+ T cells in periodontal disease", FEMS Immunology & Medical Microbiology, 03/2012

Publication

72 Ivan Darby. "Microbiology of periodontal disease in children and young adults", Periodontology 2000, 6/2001

Publication

73 Leeming, K.. "The use of immobilised biocides for process water decontamination", International Biodeterioration & Biodegradation, 200201

Publication

74 Mary Beth Giacona, Panos N. Papapanou, Ira B. Lamster, Ling Ling Rong, Vivette D. D'Agati, Ann Marie Schmidt, Evanthia Lalla. " induces its uptake by human macrophages and promotes foam cell formation in vitro ", FEMS Microbiology Letters, 2004

Publication

75 Mi-Sun Kang, Jong-Suk Oh, Hyun-Chul Lee, Hoi-Soon Lim, Seok-Woo Lee, Kyu-Ho Yang, Nam-Ki Choi, Seon-Mi Kim. "Inhibitory effect of Lactobacillus reuteri on periodontopathic and cariogenic bacteria", The Journal of Microbiology, 2011

Publication

76

O Aguilera, M.T Andr s, J Heath, J.F Fierro, C.W.I Douglas. " Evaluation of the antimicrobial effect of lactoferrin on , and ", FEMS Immunology & Medical Microbiology, 1998

Publication

<1 %

77

Ogawa, Akiko, Hideyuki Kanematsu, Katsuhiko Sano, Yoshiyuki Sakai, Kunimitsu Ishida, Iwona Beech, Osamu Suzuki, and Toshihiro Tanaka. "Effect of Silver or Copper Nanoparticles-Dispersed Silane Coatings on Biofilm Formation in Cooling Water Systems", Materials, 2016.

Publication

<1 %

78

Robert K Ulrey, Stephanie M Barksdale, Weidong Zhou, Monique L van Hoek. "Cranberry proanthocyanidins have anti-biofilm properties against Pseudomonas aeruginosa", BMC Complementary and Alternative Medicine, 2014

Publication

<1 %

79

Ryan T. Demmer. "Bleeding on probing differentially relates to bacterial profiles: the Oral Infections and Vascular Disease Epidemiology Study", Journal Of Clinical Periodontology, 4/9/2008

Publication

<1 %

80	S. Tanabe. "Helicobacter pylori and Campylobacter rectus share a common antigen", Oral Microbiology and Immunology, 4/2003 Publication	<1 %
81	acikarsiv.ankara.edu.tr Internet Source	<1 %
82	avantipublishers.com Internet Source	<1 %
83	roderic.uv.es Internet Source	<1 %
84	www.cosmoscholars.com Internet Source	<1 %
85	www.growkudos.com Internet Source	<1 %
86	www.revespcardiol.org Internet Source	<1 %
87	Bakri, I.M.. "Inhibitory effect of garlic extract on oral bacteria", Archives of Oral Biology, 200507 Publication	<1 %
88	M. Wilson, B. Henderson. " Virulence factors of relevant to the pathogenesis of inflammatory periodontal diseases ", FEMS Microbiology Reviews, 1995 Publication	<1 %

89

Shigenobu Kimura, Yuko Ohara-Nemoto, Yu Shimoyama, Taichi Ishikawa, Minoru Sasaki.
"Chapter 1 Pathogenic Factors of *P. gingivalis* and the Host Defense Mechanisms",
IntechOpen, 2012

Publication

<1 %

Exclude quotes Off

Exclude matches Off

Exclude bibliography Off

Effect of Roselle calyx Extract on Gingipain Activity, Production of Inflammatory Cytokines, and Oral Bacterial Morphology

GRADEMARK REPORT

FINAL GRADE

/0

GENERAL COMMENTS

Instructor

PAGE 1

PAGE 2

PAGE 3

PAGE 4

PAGE 5
